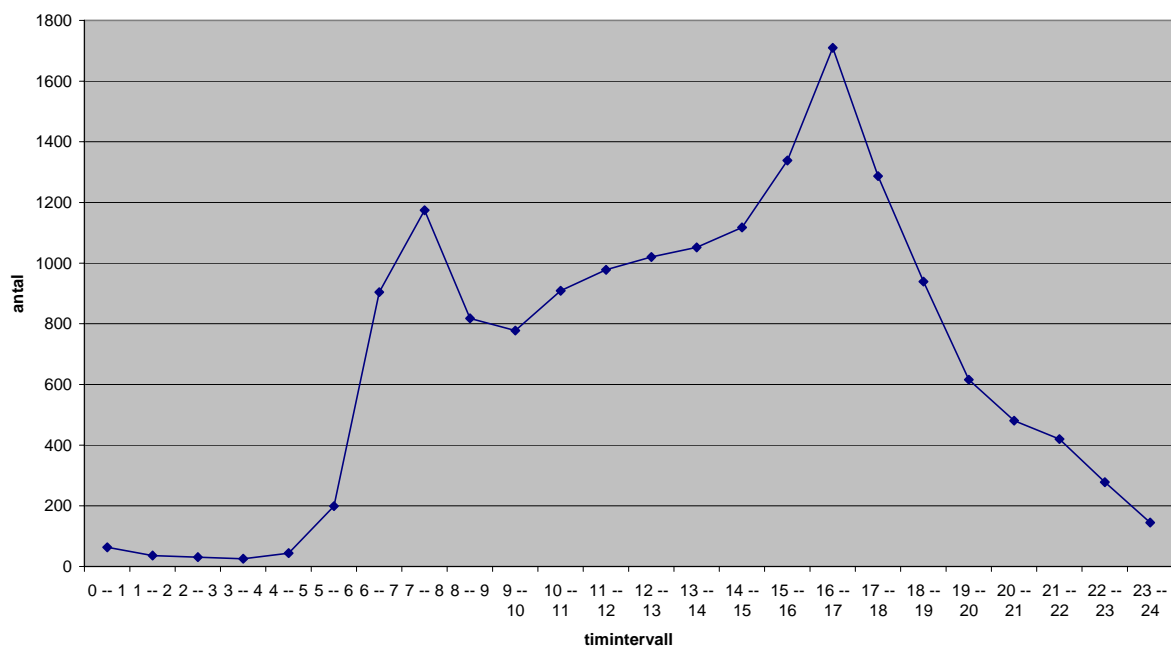


Trafiken på Ölandsbron 2006

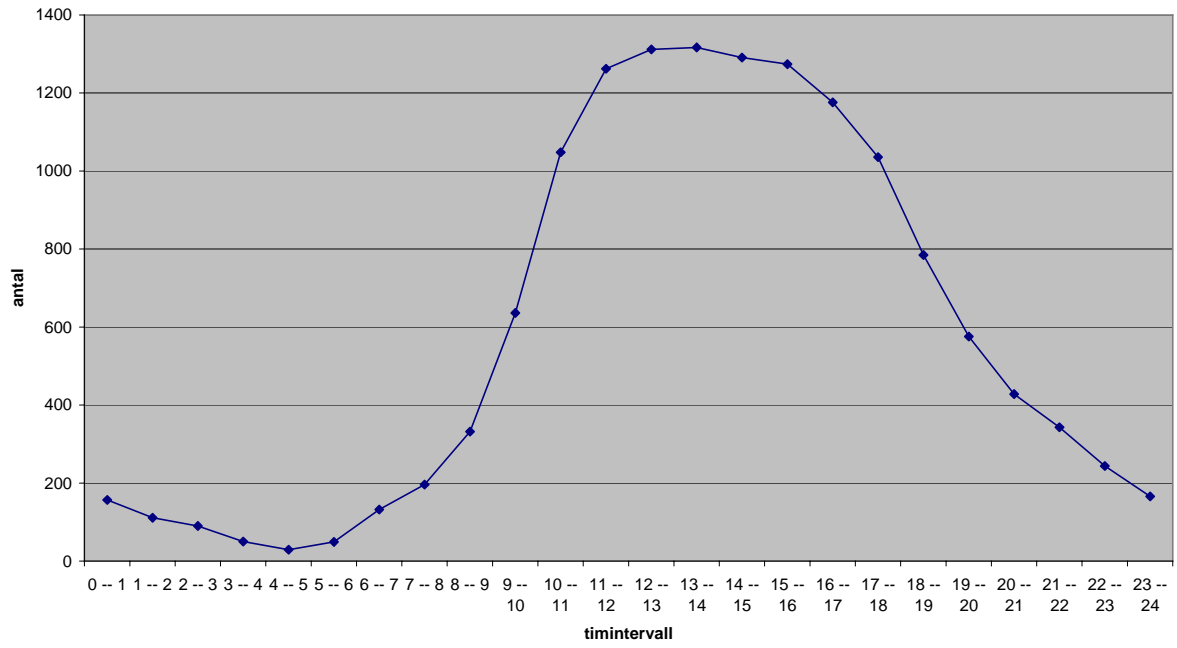
	Fordon	Personbil	Lastbil
Årsmedeldygnstrafik	15697	14881	816
Somarmedeldygnstrafik	21817	20687	1150
Vintermedeldygnstrafik	12557	11905	645

Dygnsvariation på timnivå

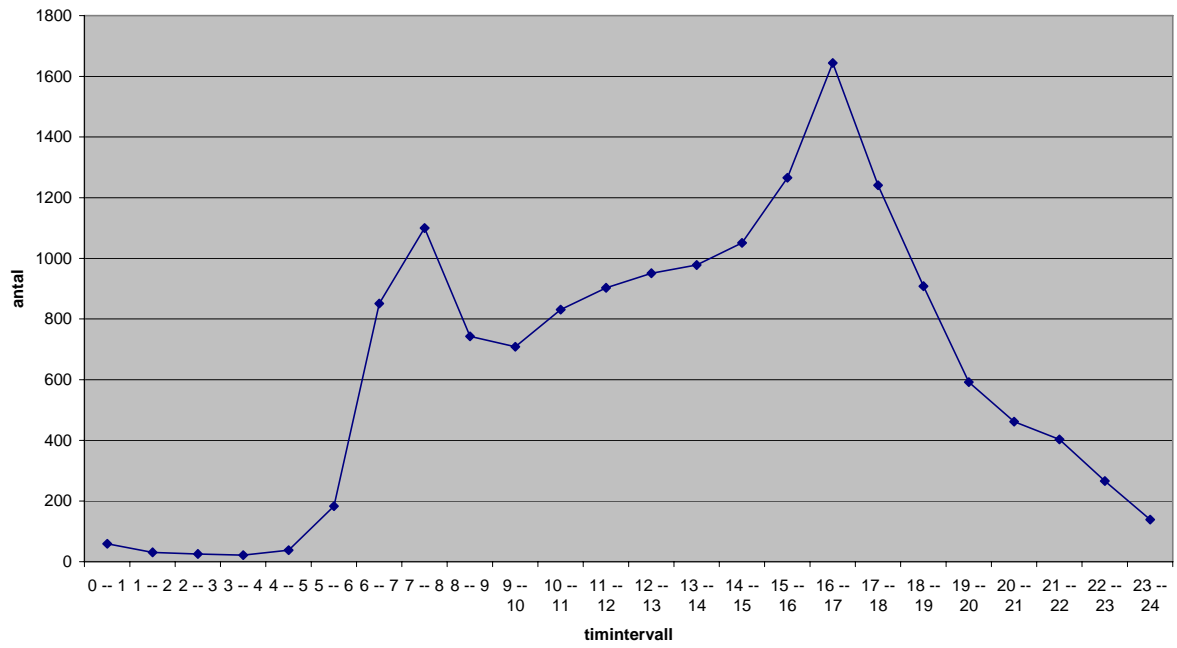
samtliga fordonsklasser vardagsdygn



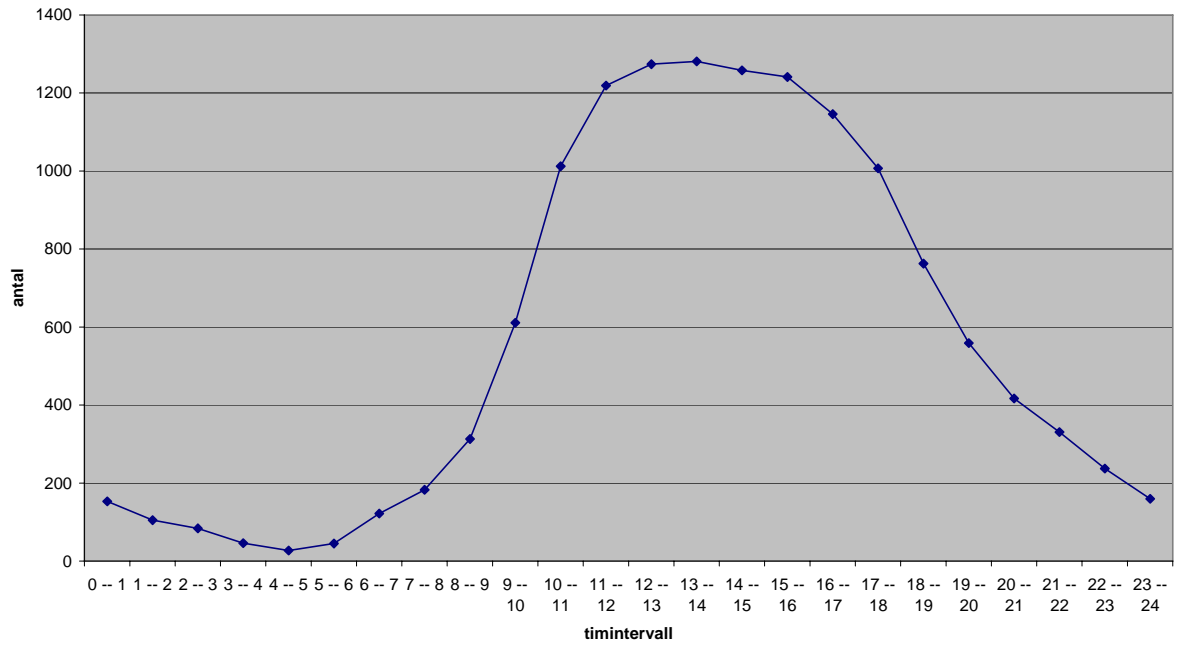
samtlige fordonsklasser helgdøgn



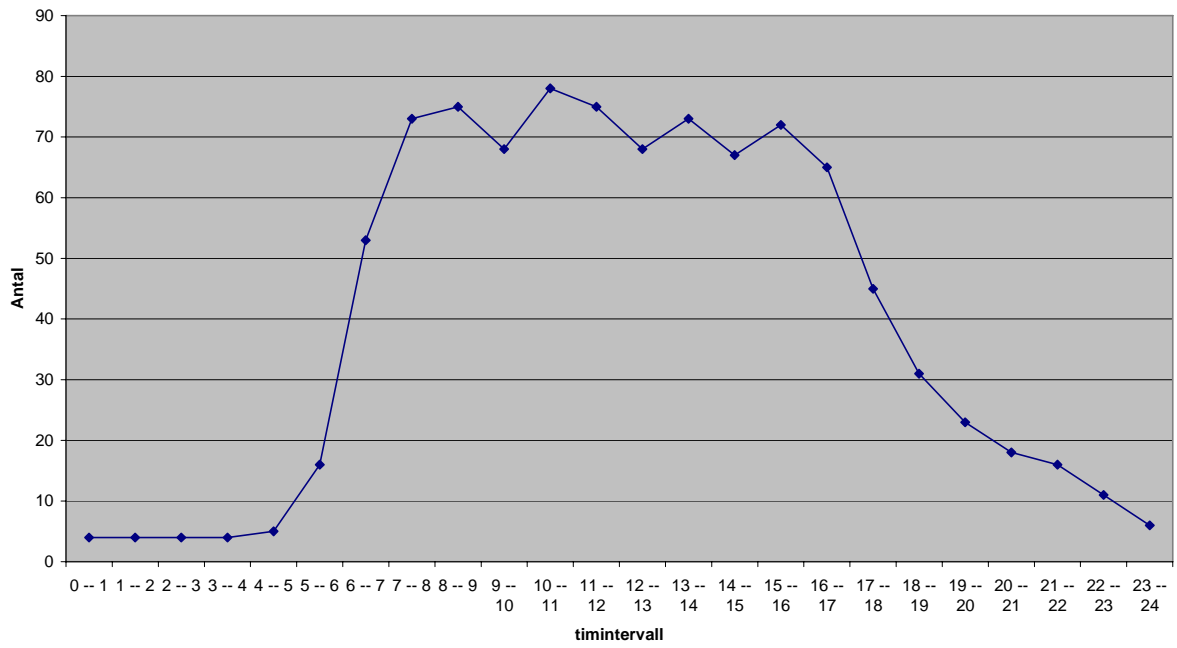
personbil vardagsdøgn



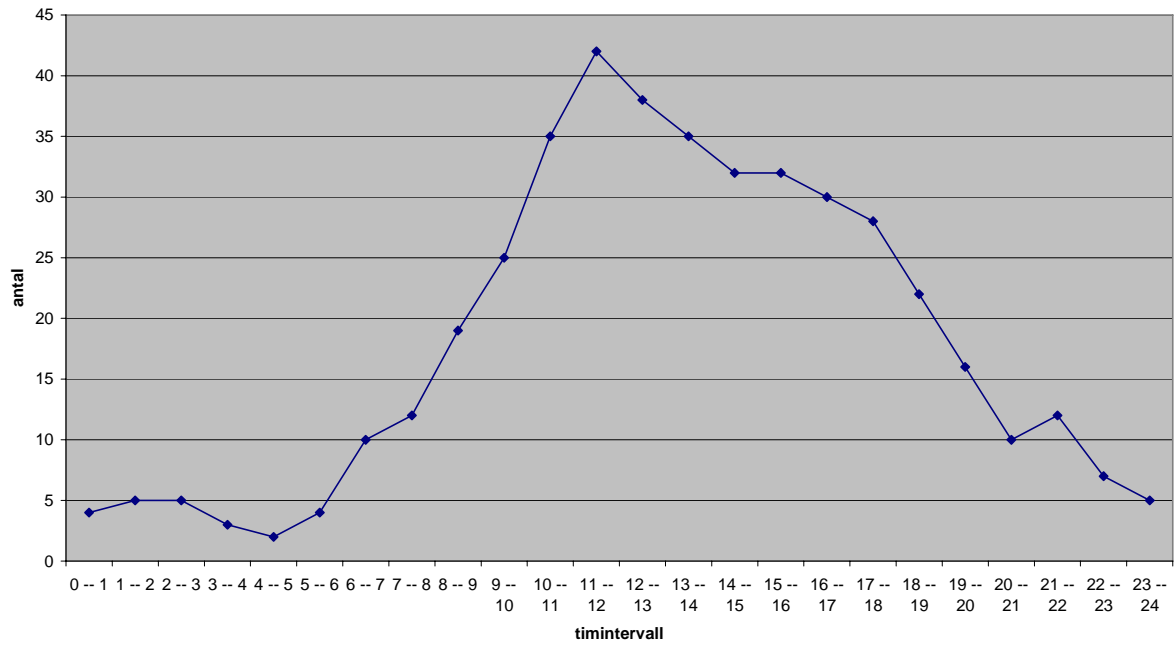
personbil helgdygn



Lastbilar vardagsdygn

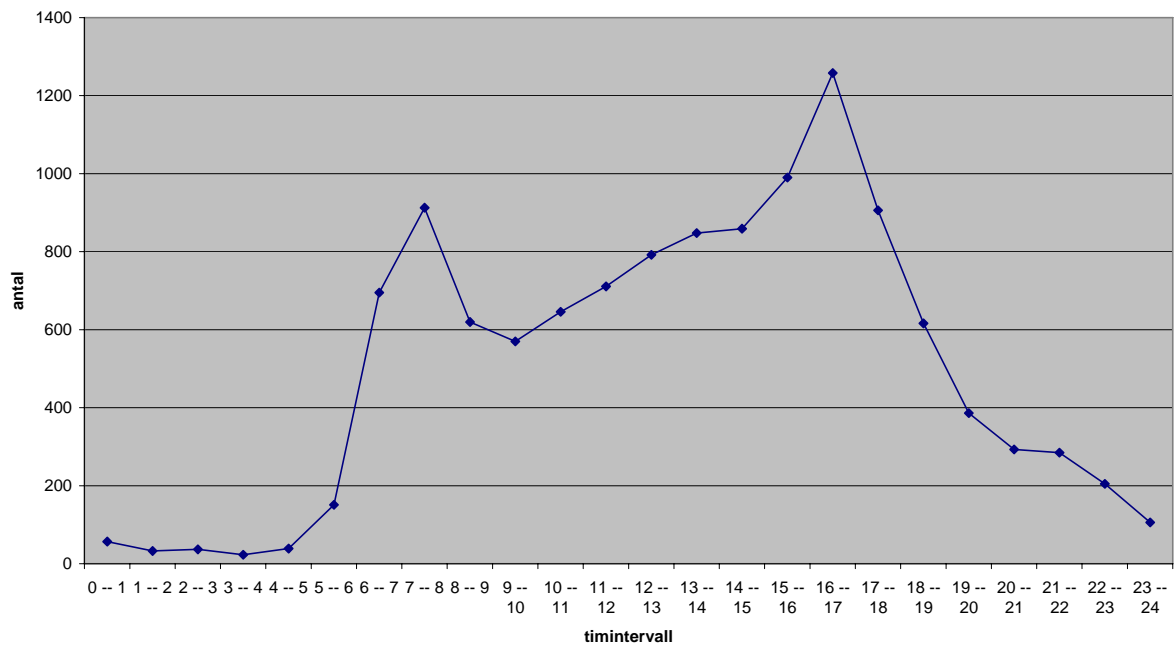


Lastbilar helgdagn

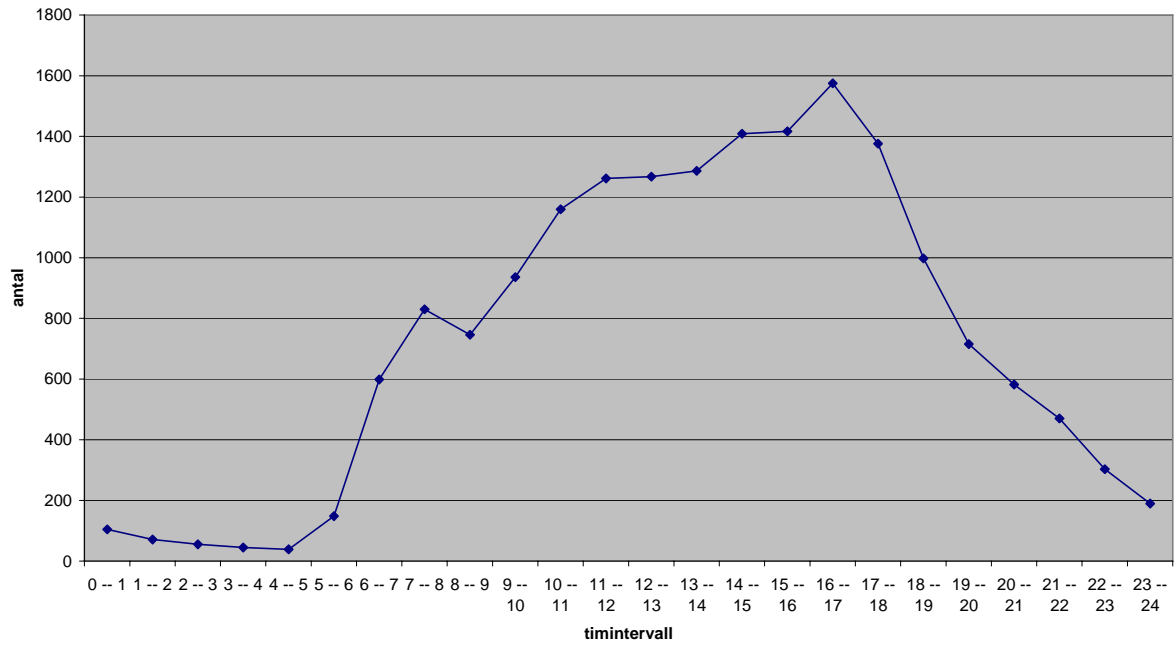


Dygnsvariation på timnivå för vår, sommar resp. höst/vinter-vecka

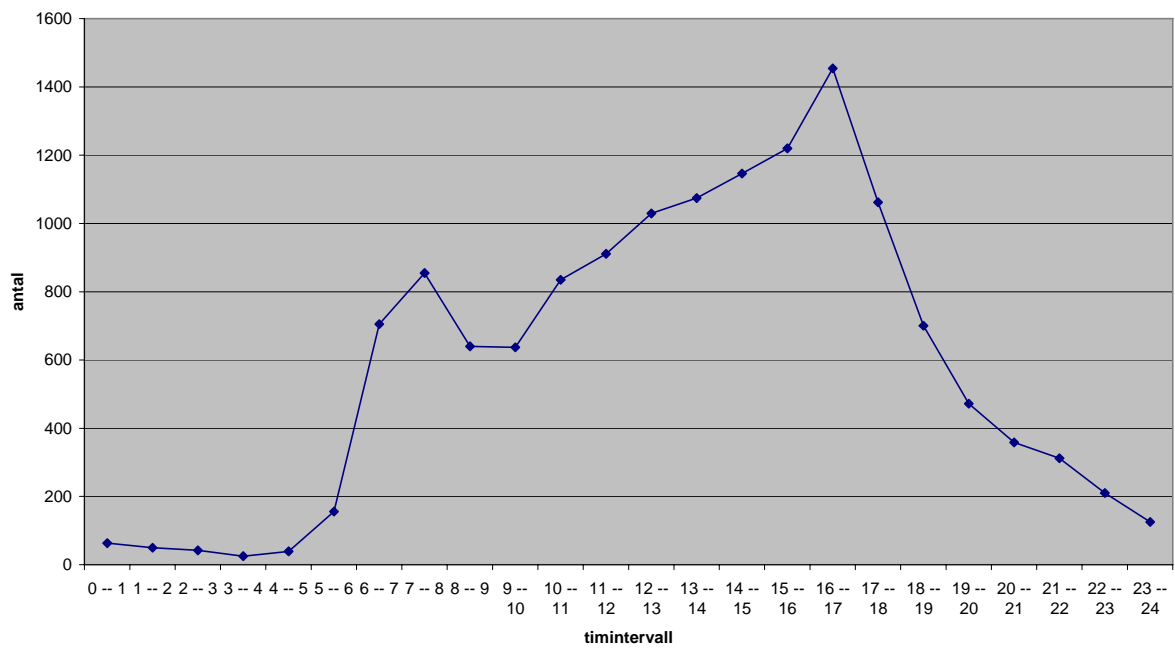
20060313 - 20060319



20060605 - 20060611



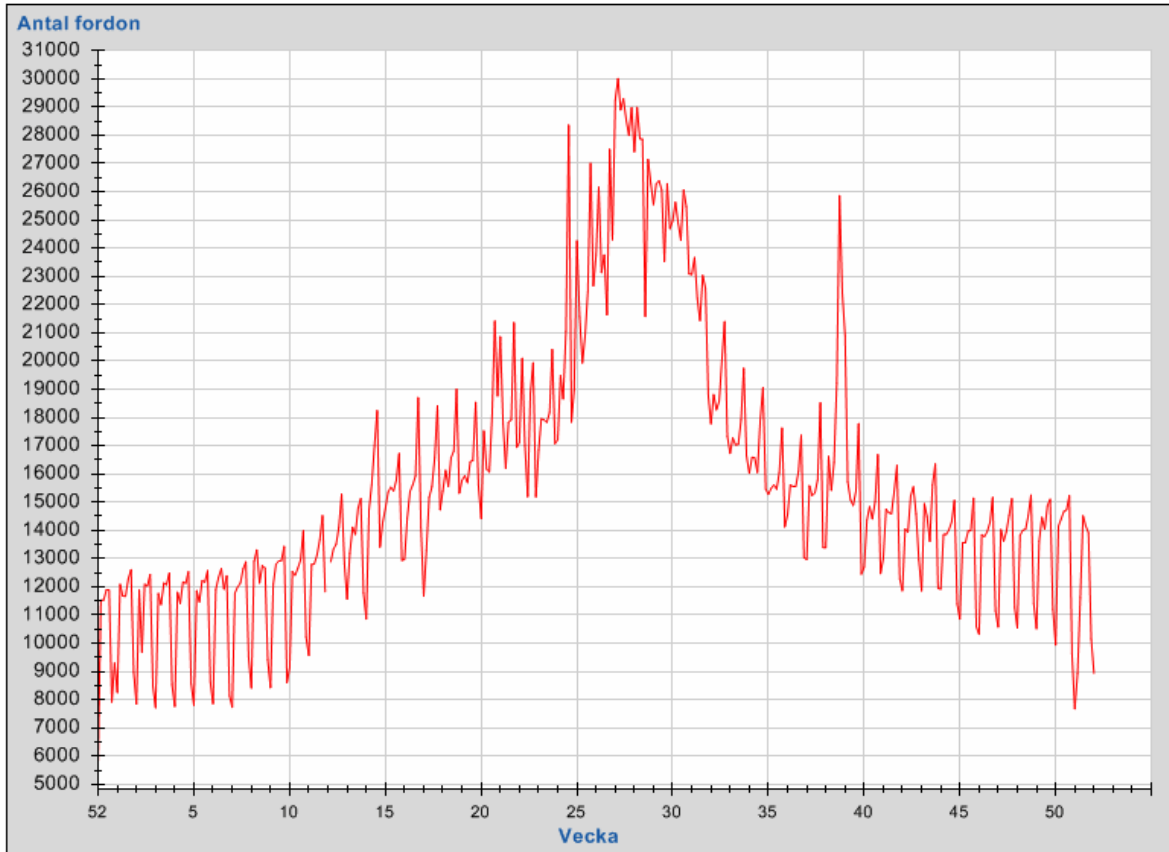
20061030 - 20061105



Årsvariation på dygnsnivå

Antal fordon, årsvariation 2006

Dygnstrafik
Punkt: 7350, ÖLANDSBRON, MULTI TOTALT Vägnr: 137
Fordonsklass: Totaltrafik Riktning: Total

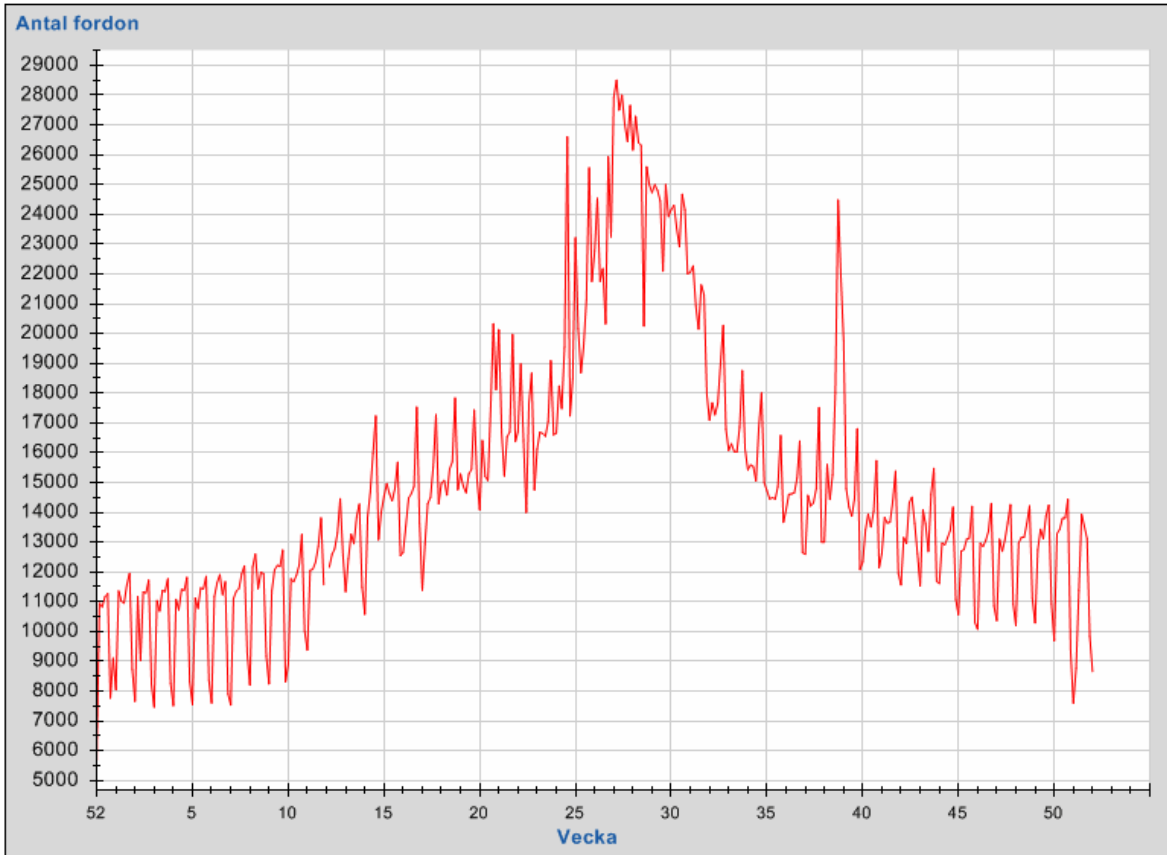


Antal fordon, årsvariation 2006

Dygnstrafik

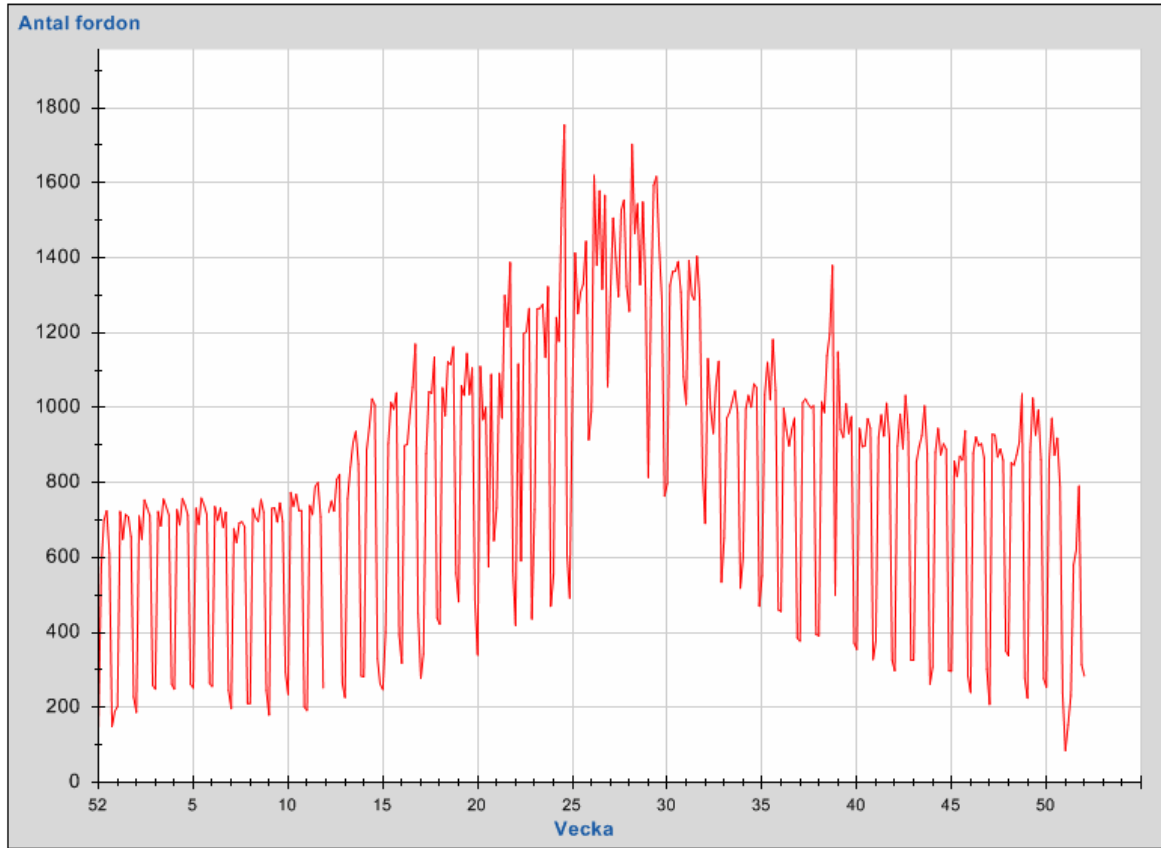
Punkt: 7350, ÖLANDSBRON, MULTI TOTALT Vägnr: 137

Fordonsklass: Personbil Riktning: Total



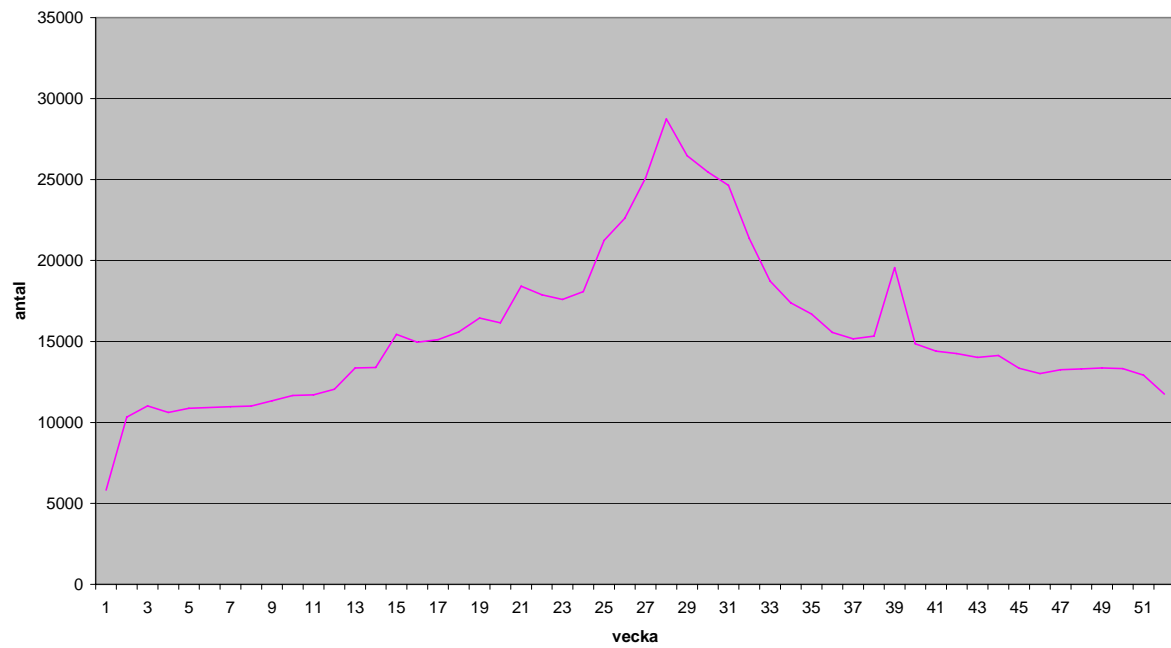
Antal fordon, årsvariation 2006

Dygnstrafik
Punkt: 7350, ÖLANDSBRÖN, MULTI TOTALT Vägnr: 137
Fordonsklass: Lastbil Riktning: Total

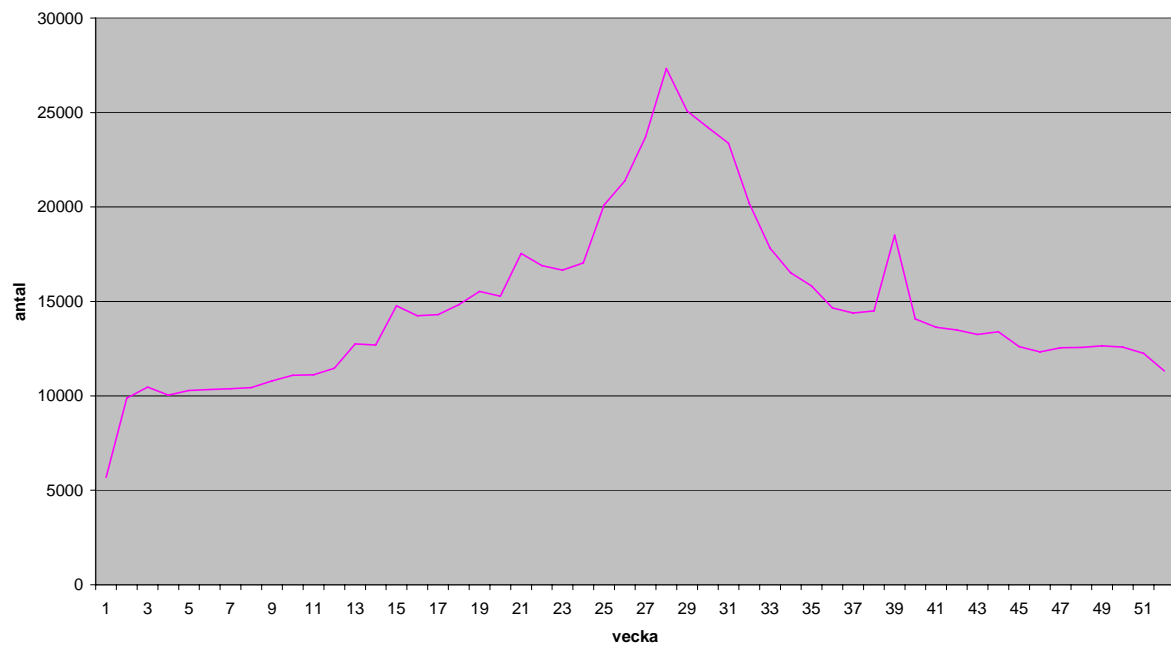


Årsvariation på veckonivå

samtliga fordonsklasser



personbilar



lastbilar

